

*注: 金属壳必须与主板的接地通 (<10 欧姆)

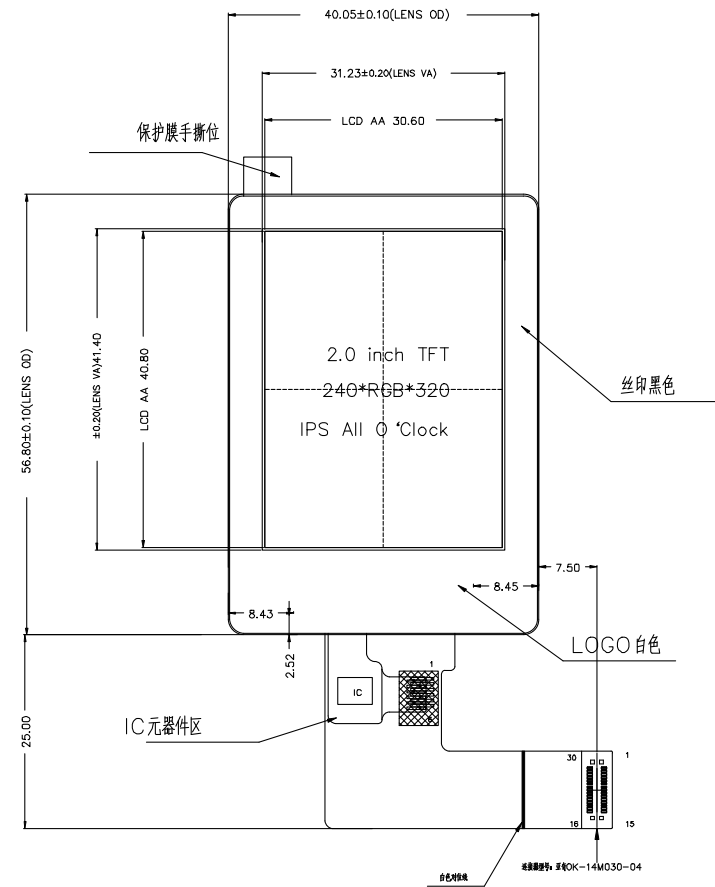
PIN 脚定义

1	VCC
2	SCL
3	SDA
4	INT
	RST
	GND

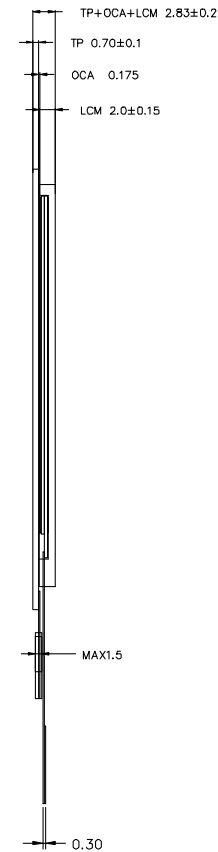
CONNECTOR 30PIN DESCRIPTION

NO.	SYMBOL
1	LEDA
2	LEDK
3	GND
4	VDD2.8V
5	OV1.8V/2.8V
6	IM1/2
7	RESET
8	CS
9	DC
10	WR
11	RD
12	TE
13	DB0
14	DB1
15	DB2
16	DB3
17	DB4
18	DB5
19	DB6
20	DB7
21	GND
22	GND
23	SDA_TP
24	SCL_TP
25	INT_TP
26	GND
27	GND
28	RST_TP
29	VCC_TP(3.0v)
30	GND

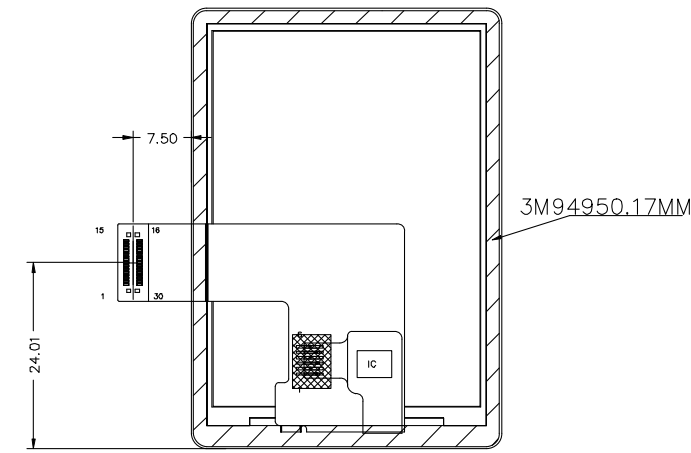
正视图



侧视图



背视图



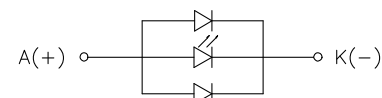
技术参数:

- COVER LENS+FPC
LENS ITO玻璃 0.7mm普通
引线 FPC
- IC: CST816D
总厚度: 0.7±0.1mm(不含胶)
- 工作电压: 2.8V-3.3 V
- 透光率: >85%
- 表面硬度: 6H
- 工作环境: -10℃~+60℃, ≤90%RH
- 储存环境: -20℃~+70℃, ≤90%RH
- 未注尺寸公差按±0.2mm

技术要求:

- 带*尺寸为重点尺寸, 带 0 尺寸为参考尺寸
- LCD 切割断面崩边≤1/3 (单层LCD厚度)
- 平面翘曲度≤0.35mm
- 符合RoHS指令
- 工作温度: -20℃~70℃
- 储存温度: -30℃~80℃
- 建议TP V.A开窗比LCD A.A单边大0.4mm
- 泡棉开窗比LCD A.A单边大0.3mm

LED CIRCUIT DIAGRAM:



LCD 型号/类型/分辨率	2.0/IPS/240*320
视觉方向	ALL
贴片方式	上细磨砂0°/下增亮90°
驱动IC	ST7789V2
LED 颗数/连接方式/电流	3-LED/并联/60mA

PART DESCRIPTION	LCM+TP		深圳鱼鹰光电科技有限公司 Shenzhen Osprey Optoelectronics Technology Co., Ltd.				
DESIGNED			UNIT mm	SCALE 1.00	3rd ANGLE	SIZE A4	SHEET NUMBER 1 of 1
CHECKED			PART NUMBER			DRAWING REV. A	
APPROVED			MODEL NAME YDP200FT002-V1			PART NUMBER VER. N/A	

REV	SIGN	DESCRIPTION	PIC	DATE
A		首次发行		2022.10.14