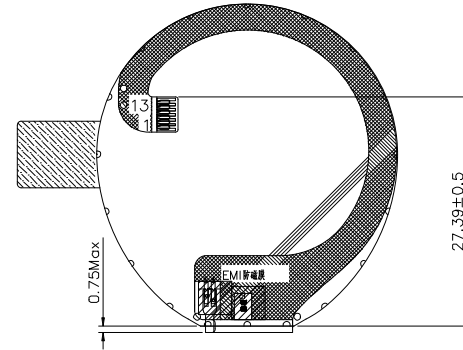
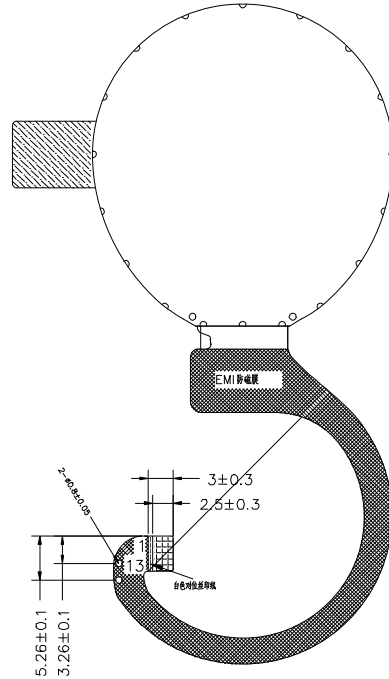
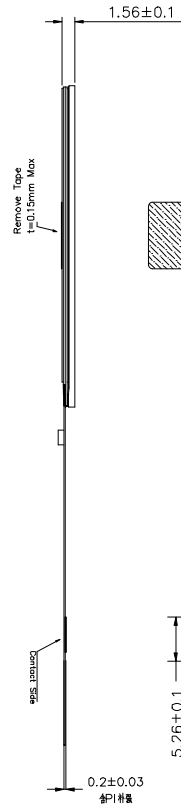
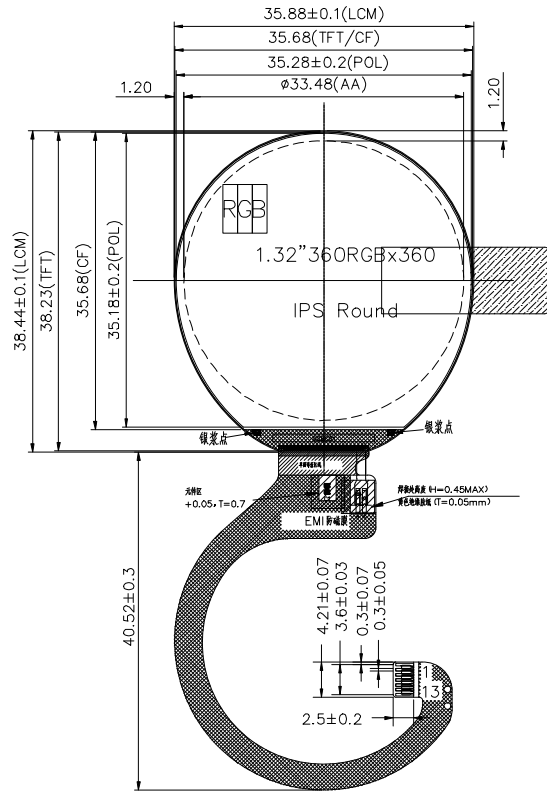


Item	Date	Remark
A	20220924	Original Drawing



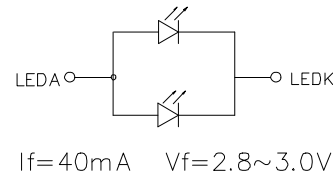
FPC折弯示意图
FPC展开出货

PIN	DESCRIPTION
1	GND
2	VCC
3	VCC
4	RESET
5	CS
6	SCL
7	IO1
8	IO0
9	TE
10	IO2
11	IO3
12	LEDA
13	LEDK

接口支持: QSPI

NOTES:

1. DISPLAY TYPE: 1.32"IPS TFT/TRANSMISSIVE/NORMALLY BLACK
2. VIEWING DIRECTION: All
3. DRIVER IC: GC9C01
4. OPERATING TEMP.: -20°C~70°C
5. STORAGE TEMP.: -30°C~80°C
6. BACKLIGHT: 2 CHIP-WHITE LED
7. LCM Luminance: 450 CD/M2(TYP)
8. UNMARKED TOLERANCE: ±0.2
9. 建议机壳开窗可视区比 LCD A.A区单边大 0.3mm
10. 产品符合ROHS标准



Customer Approval Signature	Shenzhen Osprey Optoelectronics Technology Co., Ltd.						Drawing Number	Rev.	
							1.32" TFT 触屏	A	
						Material			
						Soda Lime / Polyimide			
Unless Otherwise Specified		Title	YDP132H003-V3				Scale	Sheet	Size
Unit	mm		Drawn	E.E.	Panel / E.	P.M.			
General Roughness		By	Letter			1:1	1 of 1	A3	
Tolerance		Date	20220924						
Dimension	±0.2								
Angle	±1								