

Osptek Display

TFT LCD SPECIFICATION

Model No:

YDP0154HTB003-V3

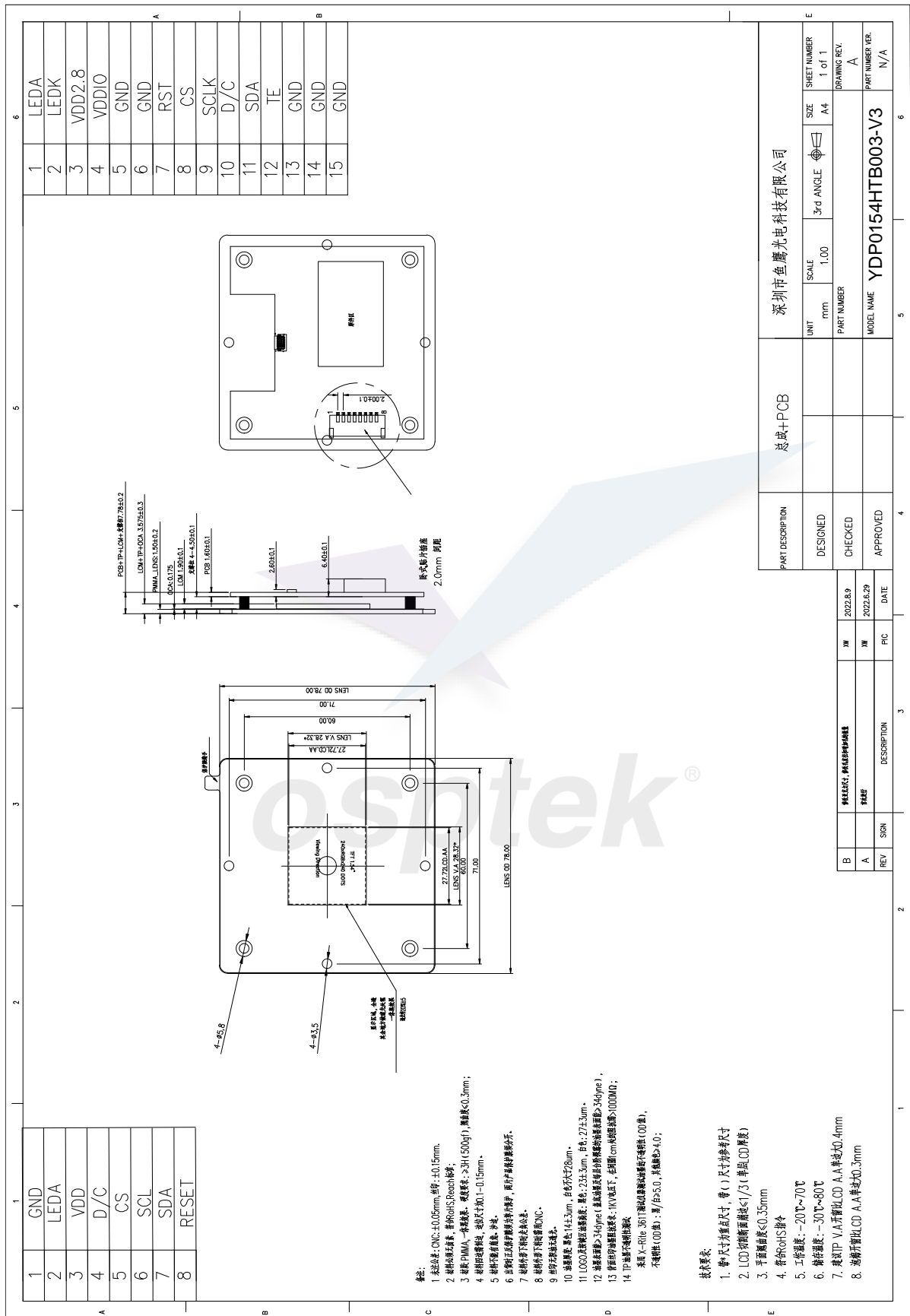
osptek[®]

General Specification

No.	Item	Dimension	Unit
1	Size	1.54	inch
2	Panel Type	IPS	-
3	Resolution	240 x RGB x 240	Pixel
4	Display Mode	Normally Black	-
5	Number of Colors	262K	-
6	Viewing Direction	All	-
7	Contrast Ratio	800	-
8	Luminance	350	cd/m2
9	Module Size	78.0 x 78.0 x 7.78	mm
10	Active Area	27.72 x 27.72	mm
11	Pixel Pitch	0.135 x 0.1356	mm
12	Driver IC	ST7789V2	
13	Light Source	3 LEDs	
14	Interface	SPI	
15	Operating Temperature	-20~70	°C
16	Storage Temperature	-30~80	°C

osptek®

Contour Drawing & Block Diagram



Interface Pin Function

No.	Symbol	Function
1	GND	Ground.
2	LEDA	Backlight anode.
3	VDD	Voltage for logic.
4	D/C	Date / Connection
5	CS	Chip Selection
6	SCL	Serial input CLK
7	SDA	Serial input/output data
8	RST	This pin is reset signal input. When the pin is pulled LOW, initialization of the chip is executed.



Absolute Maximum Ratings

Parameter	Symbol	Value	Unit	Remark
Analog Power Supply Voltage	VCI	-0.3~4.6	V	-
Digital Power Supply Voltage	VDD	-0.3~4.6	V	-
I/O Power Supply Voltage	IOVCC	IOVCC	V	-

Electrical Characteristics

Typical Operation Conditions

Item	Symbol	Min	Typ	Max	Unit
Analog Supply Voltage	VCI	2.4	2.8	3.3	V
Digital Supply Voltage	VDD	2.4	2.8	3.3	V
I/O Supply Voltage	IOVCC	1.65	1.8/2.8	3.3	V
Input High Voltage	V _{IH}	0.7* IOVCC	-	IOVCC	V
Input Low Voltage	V _{IL}	0	-	0.3* IOVCC	V
Output High Voltage	V _{OH}	0.8* IOVCC	-	-	V
Output Low Voltage	V _{OL}	-	-	0.2* IOVCC	V

Backlight Circuit Characteristics

Item	Symbol	Min	Typ	Max	Unit
LED Current	I _B		15	-	mA
LED Voltage	V _f		3.2	3.3	V
Power Consumption	P _{BL}			-	mW