

# Osptek Display

## OLED SPECIFICATION

Model No:

**ODM096-12864B101-P4**

*osptek*<sup>®</sup>

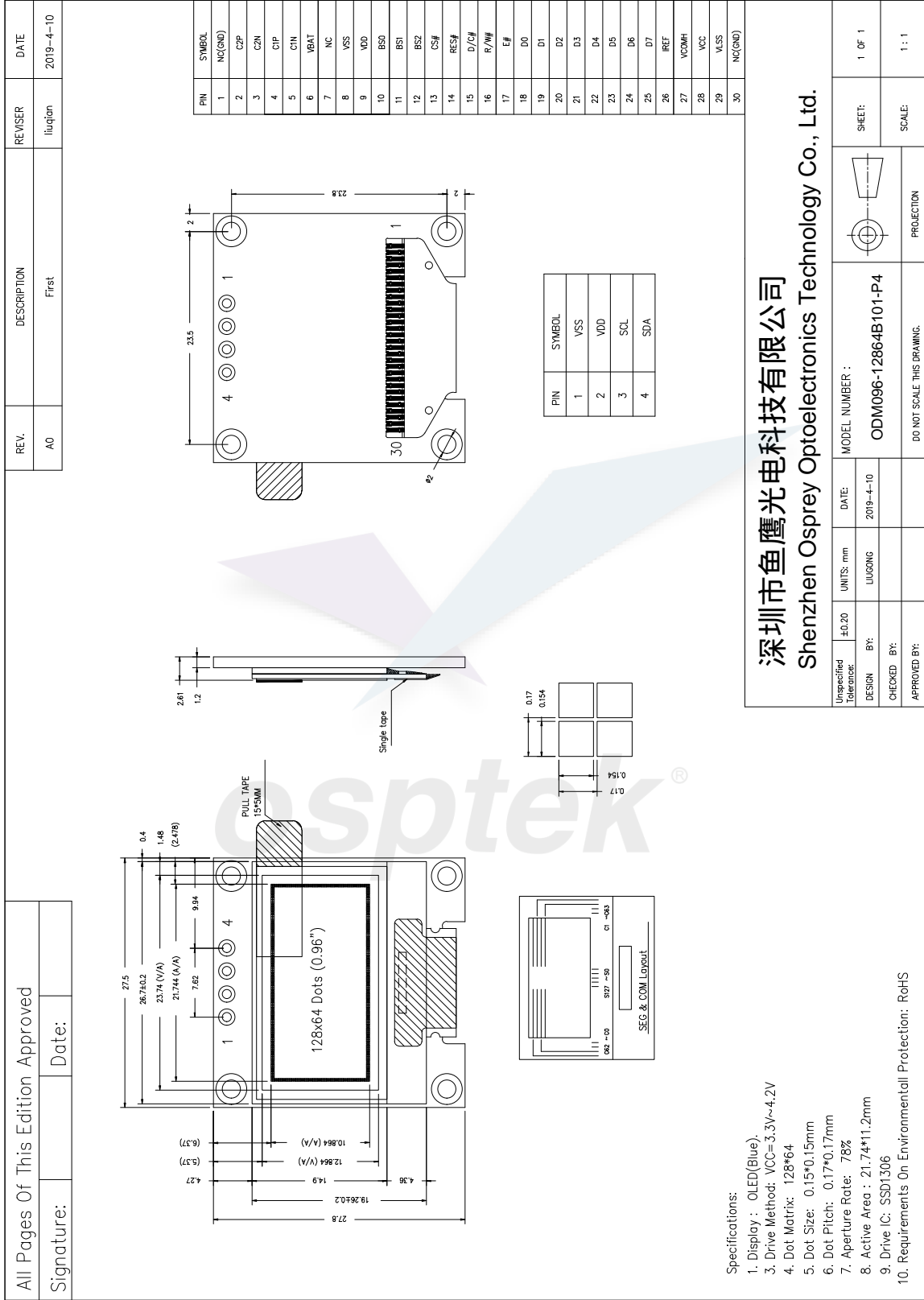
## General Specification

Item	Dimension	Unit
Dot Matrix	128 x 64 Dots	-
Module dimension	27.5 x 27.8 x 2.61	mm
Active Area	21.744 x 10.864	mm
Pixel Size	0.15 x 0.15	mm
Pixel Pitch	0.17 x 0.17	mm
Display Mode	Passive Matrix	
Display Color	Blue	
Drive Duty	1/64 Duty	
Frame rate	105Hz	
IC	SSD1306	
Interface	I2C	
Size	0.96 inch	



osptek®

# Contour Drawing & Block Diagram



## Interface Pin Function

No.	Symbol	Function
1	VSS	Ground of Logic Circuit This is a ground pin. It acts as a reference for the logic pins. It must be connected to external ground.
2	VDD	Power Supply for Logic This is a voltage supply pin. It must be connected to external source.
3	SCL	IIC Bus Clock Signal The transmission of information in the I2C bus is following a clock signal. Each transmission of data bit is taken place during a single clock period of this pin.
4	SDA	I2C Bus Data Signal This pin acts as a communication channel between the transmitter and the receiver.

## Absolute Maximum Ratings

Parameter	Symbol	Min	Max	Unit
Supply Voltage for Logic	VDD	3.3	4.2	V
Operating Temperature	TOP	-40	+80	°C
Storage Temperature	TSTG	-40	+85	°C

## Electrical Characteristics

### DC Electrical Characteristics

Item	Symbol	Condition	Min	Typ	Max	Unit
Supply Voltage for Logic(3V/5V)	VDD	-	3.3	-	4.2	V
Input High Volt.	VIH	-	0.8xVCC	-	VCC	V
Input Low Volt.	VIL			-	0.2xVCC	V
Output High Volt.	VOH	-	0.9xVCC	-	VCC	V
Output Low Volt.	VOL	-	0	-	0.1xVCC	V
50% Check Board operating Current	ICC	VCC=2.8V	-	160	220	mA

