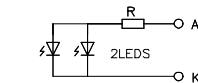
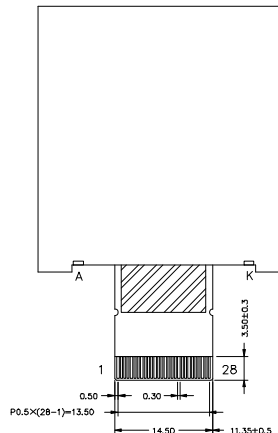
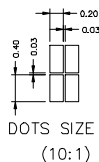
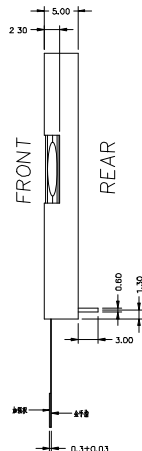
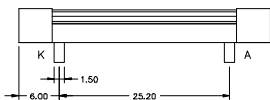
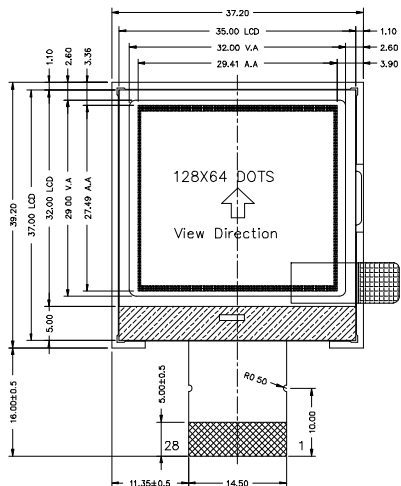


All Pages Of This Edition Approved

Signature: _____

Date: _____

REV.	DESCRIPTION	REVISER	DATE
AO	New Release	Liu Gong	2022-11-15



PIN	SYMBOL
1	CS1
2	RESET
3	RS
4	WR
5	E
6	DO
7	D1
8	D2
9	D3
10	D4
11	D5
12	D6
13	D7
14	VDD
15	VSS
16	NC
17	NC
18	NC
19	VO
20	XVO
21	NC
22	NC
23	VG
24	NC
25	NC
26	NC
27	NC
28	P/S

Specifications:

1. Display Mode: FSTN/Positive/Transflective.
2. Viewing Angle: 6 O'clock.
3. Drive Method: 1/65Duty, 1/9Bias, VLCD=8.8±0.2V, VDD=3.0V.
4. Backlight Type: White, 3.5V, 30mA, 2pcs.
5. Operating Temp: -20°C~+70°C.
6. Storage Temp: -30°C~+80°C.
7. Connector: COG+FPC
8. Drive IC: ST7567(COG)
9. Customer P/N: --
10. Unmarked Tolerance: ±0.2mm
11. Requirements On Environmental Protection: RoHS

深圳市鱼鹰光电科技有限公司

DESIGN BY:	NAME: Liu Gong	DATE: 2022-11-15	MODEL NUMBER : LCD12864-1937		SHEET: 1 OF 1
CHECKED BY:			DEFAULT UNITS: mm		NAME: LCM
APPROVED BY:					